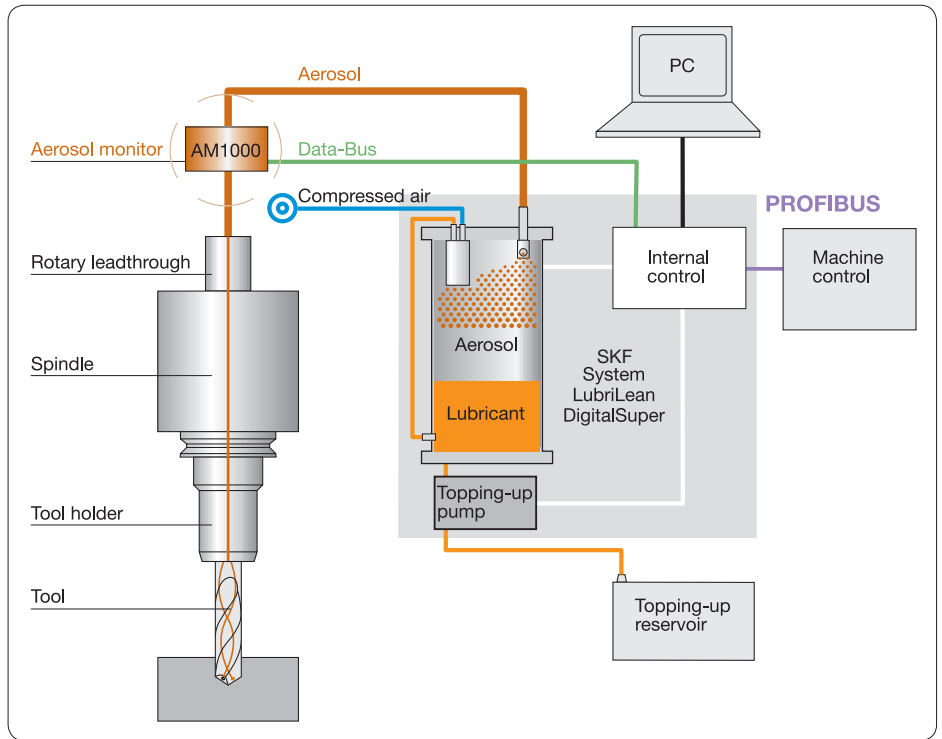
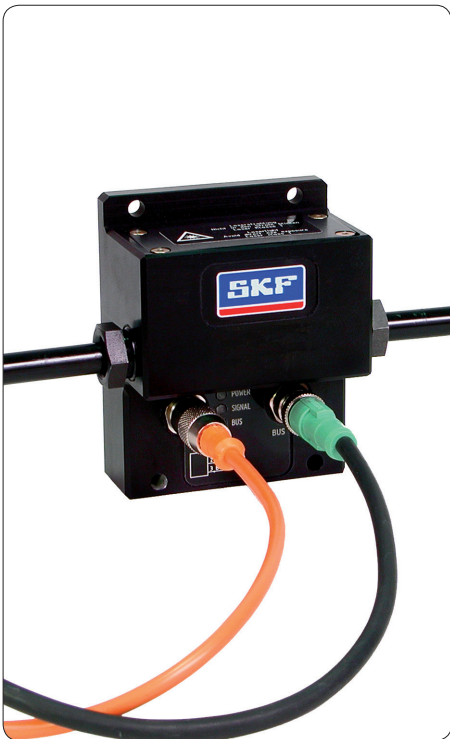


For reliable machining processes

SKF Aerosol monitor AM1000



Reliable

Direct monitoring of aerosol density at the tool spindle

Assured future

Communication with SKF LubriLean DigitalSuper units via Data-BUS

Customer-friendly

Easy into integrate in system



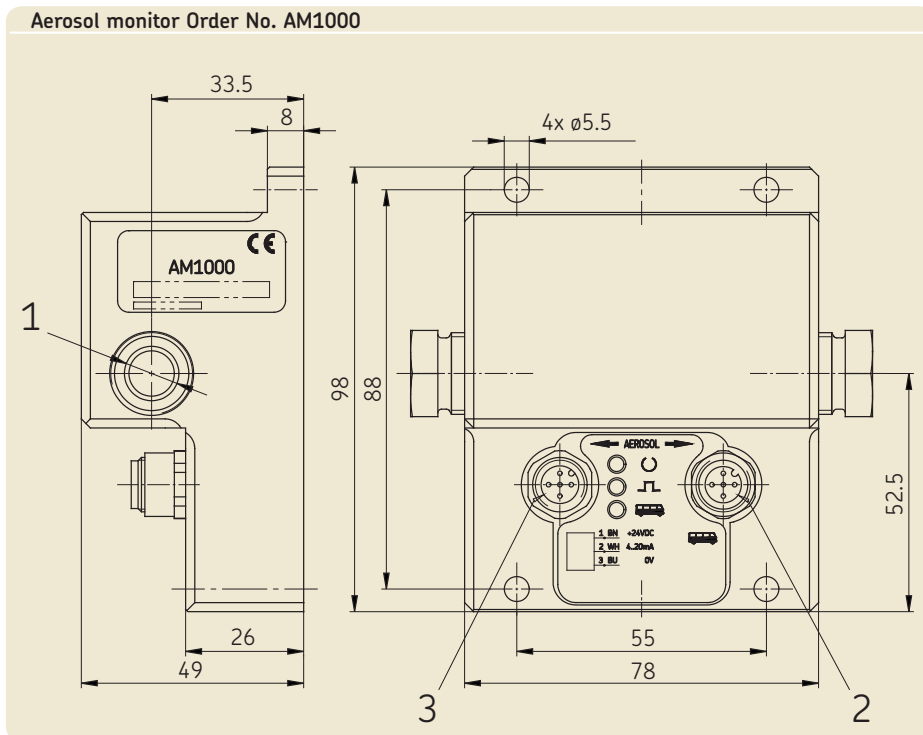
Continuous monitoring of the aerosol

The SKF AM1000 aerosol monitor is a measuring sensor for continuous monitoring of the aerosol flow in minimal quantity lubrication systems. It was specially developed for use on SKF DigitalSuper MQL systems, but it can also run on an autonomous basis.

An analog current signal can be picked up directly from the aerosol monitor. It provides a yardstick for the prevailing aerosol density. If a current value deviates from the reference value, that can be interpreted immediately as a warning. As an optional feature, it is also possible to define a measuring range of interest with the help of a teach adapter.

SKF DigitalSuper systems make it possible to obtain a machining- and tool-dependent yardstick for the aerosol or oil throughput. The value for the aerosol current and also the volumetric air flow and aerosol density are sent to the machine tool via a PROFIBUS interface.

A comparison of the current measured values with the reference values determined earlier lets the user detect significant deviations in the aerosol supply in real time.



Technical data

Aerosol:

Medium	aerosol for MQL
typical droplet \varnothing	0.5 to 5 μm
Max. permissible pressure	10 bars
Max. throughput	800 Nl/min

Connections:

1) Aerosol	for \varnothing 12 mm hose
2) Data-BUS	M12x1, 5-pole socket type
3) Power supply	M12x1, 5-pole pin type

Operating voltage 24 V DC $\pm 25\%$

Power consumption with load max. 80 mA

Output signal:
power input 4 to 20 mA

Data output for communication with SKF LubriLean DigitalSuper units via BUS

For more information about SKF LubriLean minimal quantity lubrication and accessories for the aerosol monitor, see brochure No. 1-5102-EN

SKF Lubrication Systems Germany GmbH

Motzener Strasse 35/37 · 12277 Berlin · Germany
 PF 970444 · 12704 Berlin · Germany
 Tel. +49 (0)30 72002-0 · Fax +49 (0)30 72002-111
www.skf.com/lubrication