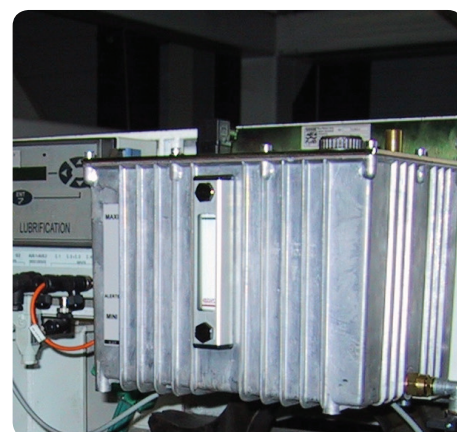
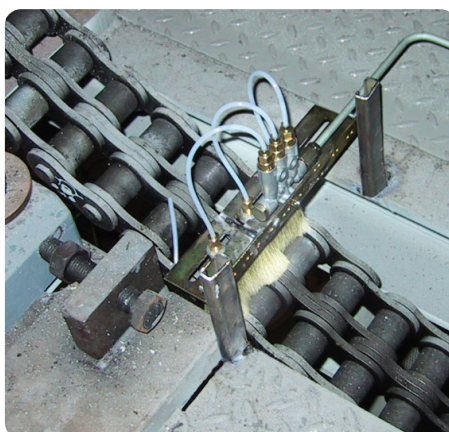
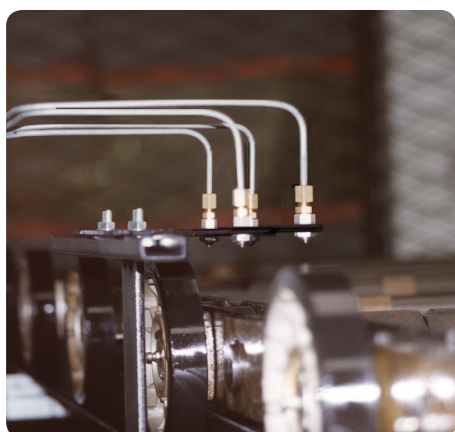


Chain lubrication, accessories

Nozzles, oiling brushes, reservoirs and other accessories for chain lubrication



Oil projection nozzle AC-A

Compact design, pinpoint accuracy, and high temperature resistant, the projection nozzles AC-A are perfectly suited to aggressive surroundings. These nozzles spray, **straight and without air**, microdosis of oil under pressure, which are delivered by pneumatic or electromagnetic micropumps. The spray distance can vary from a few centimeters up to several decimeters.

AC-A nozzles spray **mineral or synthetic oil** with a viscosity of 100 mm²/s at 40 °C. The metered volumes range from 10 to 60 mm³, according to the model.

Nozzles have a metallic casing and are equipped with a check valve. They have fluorocarbon seals (FPM), although not in high temperature applications. They are fed via tubes Ø 4 × 0,75 with a max. length of 3 m.



Note

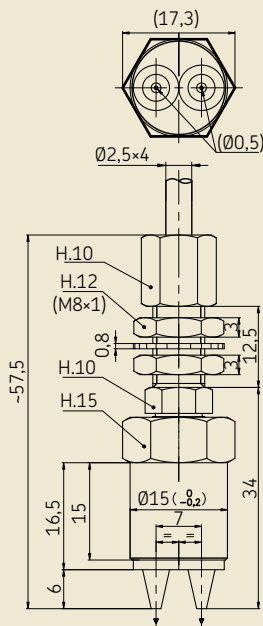
The tubes have to be imperatively metallic, as direct as possible, and without connectors on the pump/nozzle line. The inner diameter of the tube shall not exceed 3 mm.

Order information

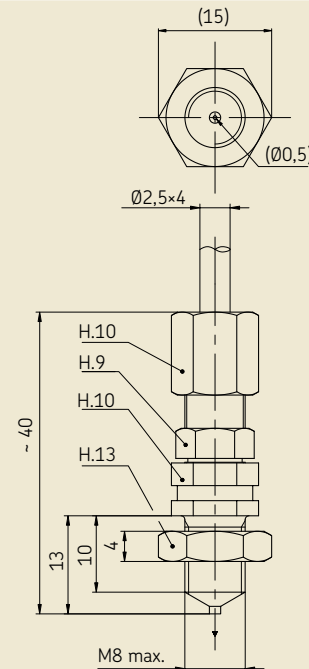
Order No.	Volume possible [mm ³ /stroke]	Number of outlets	Valve* [bar]	Temperature [°C]	Seal	Fixing	Weight [g]
AC-A-404	40/60	2	6	10 to 220	FPM	Ø 15 / Ø 8 × 1	52
AC-A-406	20/40	1	6	10 to 220	FPM	M 8 × 1,25	22
AC-A-416	40/60	1	6	10 to 220	FPM	M 8 × 1,25	25
AC-A-406-BP	20/40	1	3	10 to 250	–	M 8 × 1,25	21

*) Valve setting at 20 °C for an oil with recommended viscosity

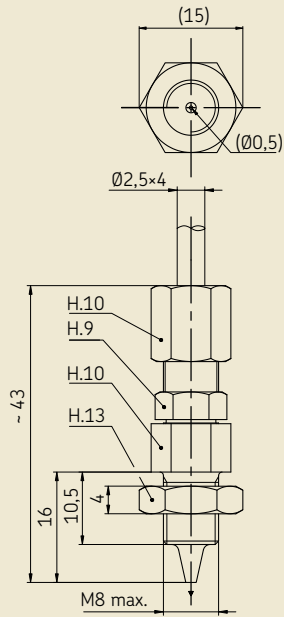
AC-A-404



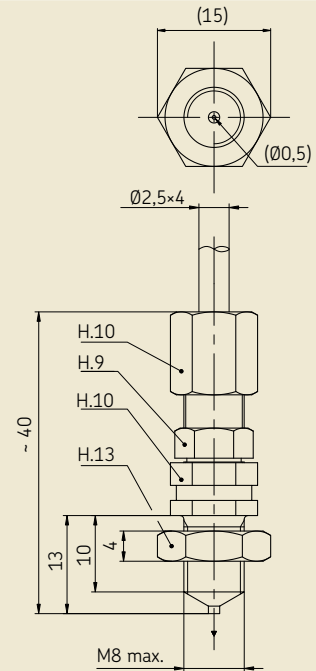
AC-A-406



AC-A-416



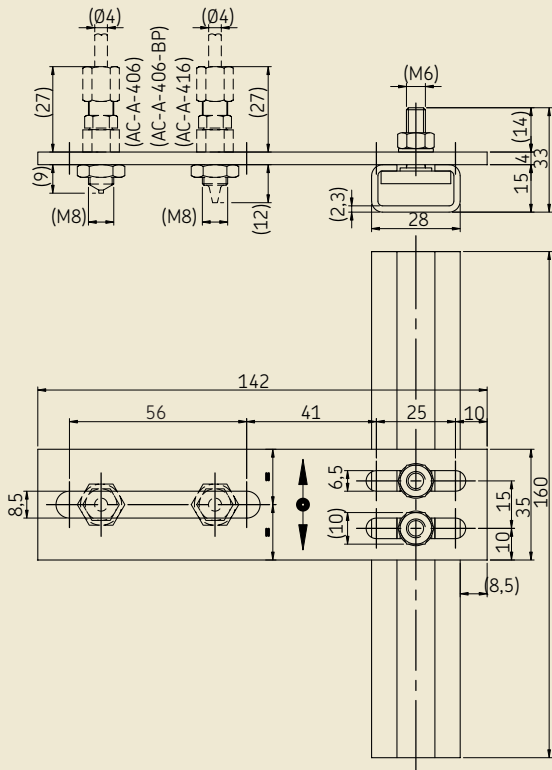
AC-A-406-BP



Fixation support

Fixation support (nut and adjustable support for threaded nozzles)
 Order No **UC-1065**

UC-1065



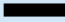





Oiling brushes

Oiling brushes UC are used to apply lubricant to a chain. They ensure a constant lubricant film on the chain. These brushes are available in different shapes and sizes and with different materials (bristle, brass or polyamide) in order to better meet the customers' chain needs and specifications. The brushes are fed with tubes $\varnothing 4 \times 0,75$.

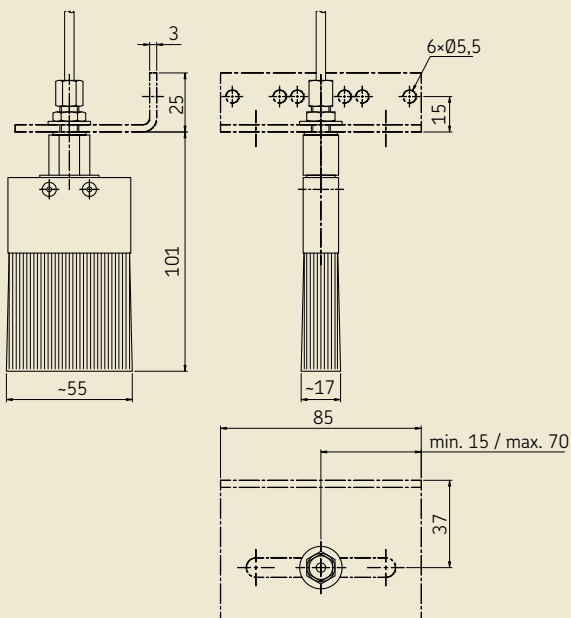
Brushes are delivered without bracket supports, which have to be ordered separately.



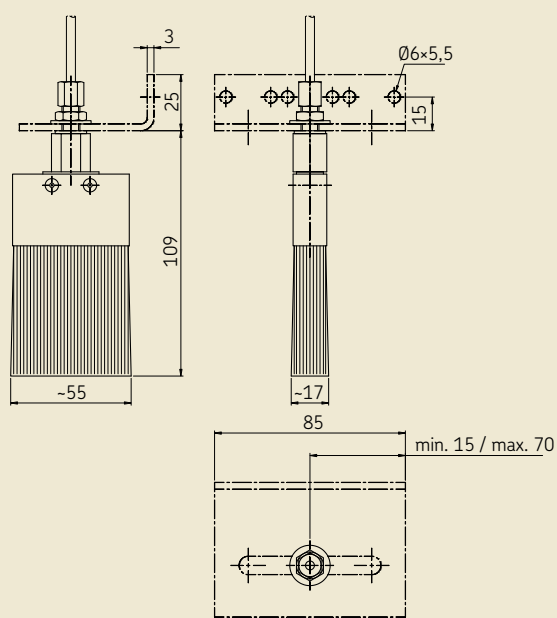
Order information

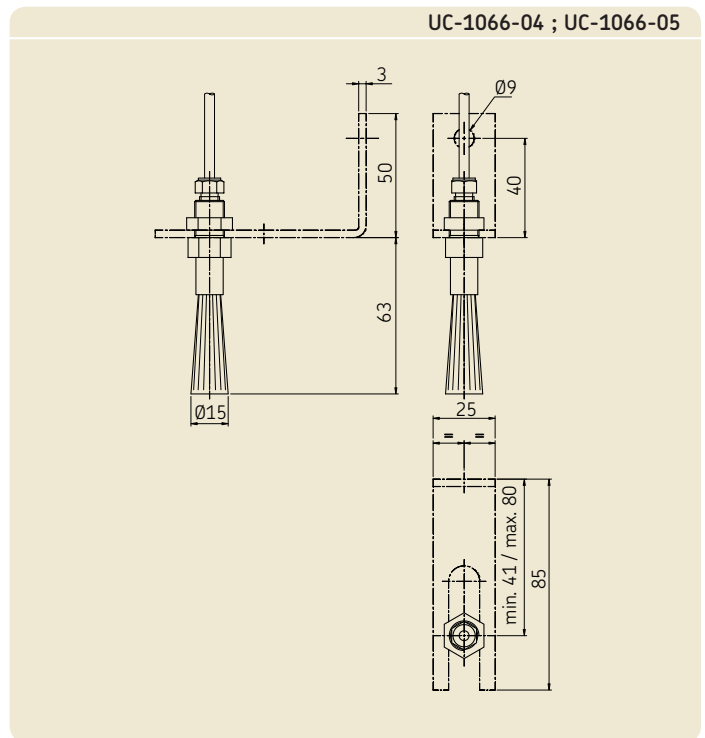
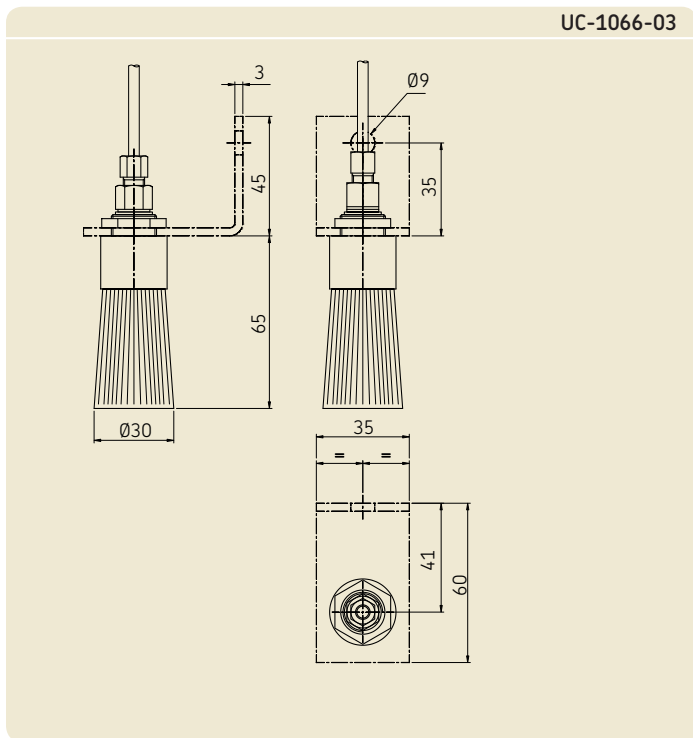
Order No.	Shape	Sizes [mm]	Temperature [°C]	Brush material	Fixing [mm]	Weight [g]	Bracket support Order No.
UC-1066-01		55 × 16	10 to 60	Bristle	$\varnothing 8,5$	110	AC.2879
UC-1066-02		55 × 16	10 to 200	Brass	$\varnothing 8,5$	160	AC.2879
UC-1066-03		$\varnothing 30$	10 to 60	Bristle	$\varnothing 19$	85	UC.1010.100
UC-1066-04		$\varnothing 15$	10 to 60	Bristle	$\varnothing 12,5$	45	AC.3398
UC-1066-05		$\varnothing 15$	10 to 80	Polyamide 6.6	$\varnothing 12,5$	45	AC.3398
UC-1066-06		55 × 16	10 to 80	Polyamide 6.6	$\varnothing 12,5$	45	AC.2879

UC-1066-01 ; UC-1066-06



UC-1066-02



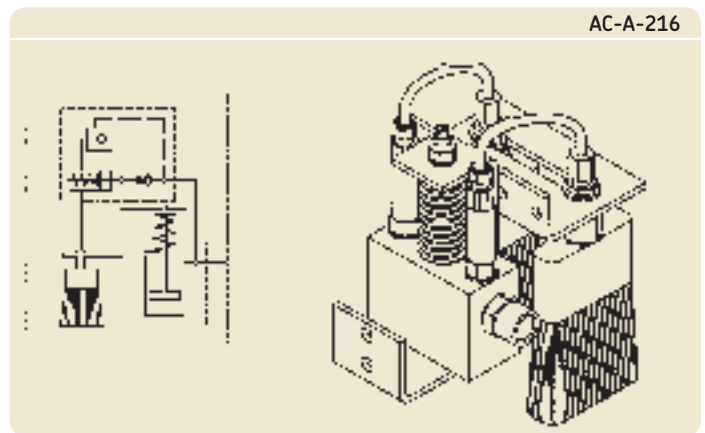


Retractable oiling brushes

Retractable brushes with volumetric oil supply are driven by a motor pump.

These brushes, which are controlled by a control unit, are only in contact with the chain during lubrication. This control unit can set the brushes contact time with the chain, the oil injection frequency and the time between two lubrication phases. When paused, the brushes are lifted up to limit wear.

Model A.C.A.210: retractable brushes without metering unit.



Order information

Order No.	Shape	Volume [mm ³]	Quantity	Sizes [mm]	Temperature [°C]	Brush material	Fixing [mm]	Ø tube [mm]	Weight [g]
AC.A.216.20	■	20	× 2	55 × 16	10 to 60	Bristle	2 × Ø 6,5	8 × 1	940
AC.A.216.40	■	40	× 2	55 × 16	10 to 60	Bristle	2 × Ø 6,5	8 × 1	940
AC.A.210	■			55 × 16	10 to 60	Bristle	2 × Ø 6,5	8 × 1 and 4 × 0,75	600

Oil reservoirs

These reservoirs, with a capacity of 3,3 l to 20 l, supply lubricant to the pneumatic or electro-magnetic pumps of the chain lubrication system. They can be equipped with a stopcock valve to be used during maintenance on the lubrication system.

The lubricant minimum level can be visually (sight glass) or electrically (level switch) monitored.

As an option, reservoirs can include an electric preheating device to maintain the lubricant at the optimal operating temperature. It is also possible for reservoirs to come with level switches with two switching points (warning and minimal).

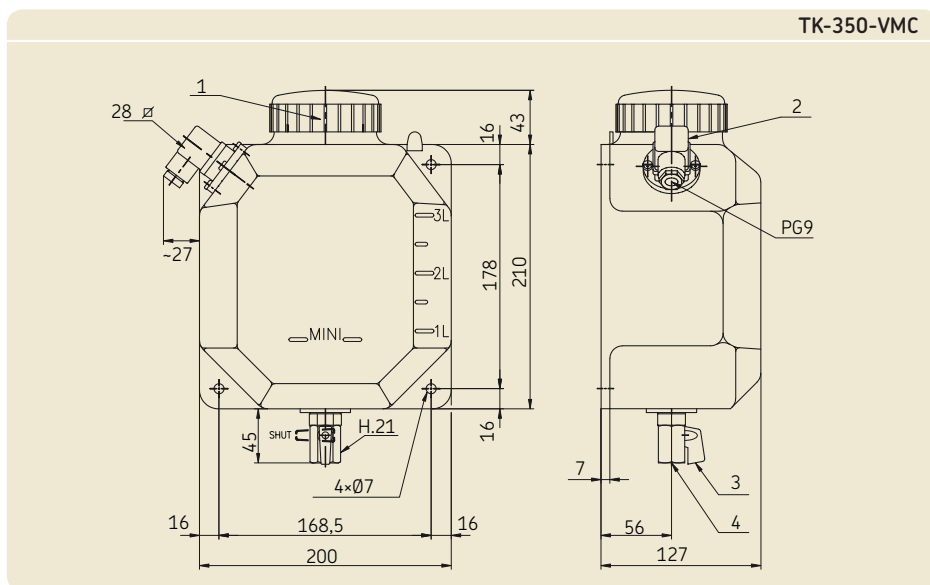


Order information

Order No.	Capacity [l]	Material	Min. Level switch	Stopcock valve	Filter [µm]	Service temperature [°C]	Weight (ca.) [kg]
TK-350-VMC	3,3	PE	•	•	200 (outlet)	-10 to +60	1,2
TK-840-V	10	aluminum	-	•	400 (inlet)	-10 to +60	6,255
TK-840-VM	10	aluminum	•	•	400 (inlet)	-10 to +60	6,40
TK-940	20	aluminum	•	•	400 (inlet)	-10 to +60	15

TK-350-VMC

1. Filling plug with filter
2. Min. level switch (with connector), NO, when the min. level is reached, the contact opens
3. Stopcock valve
4. Outlet port with filter G 1/4, max. depth 9 mm



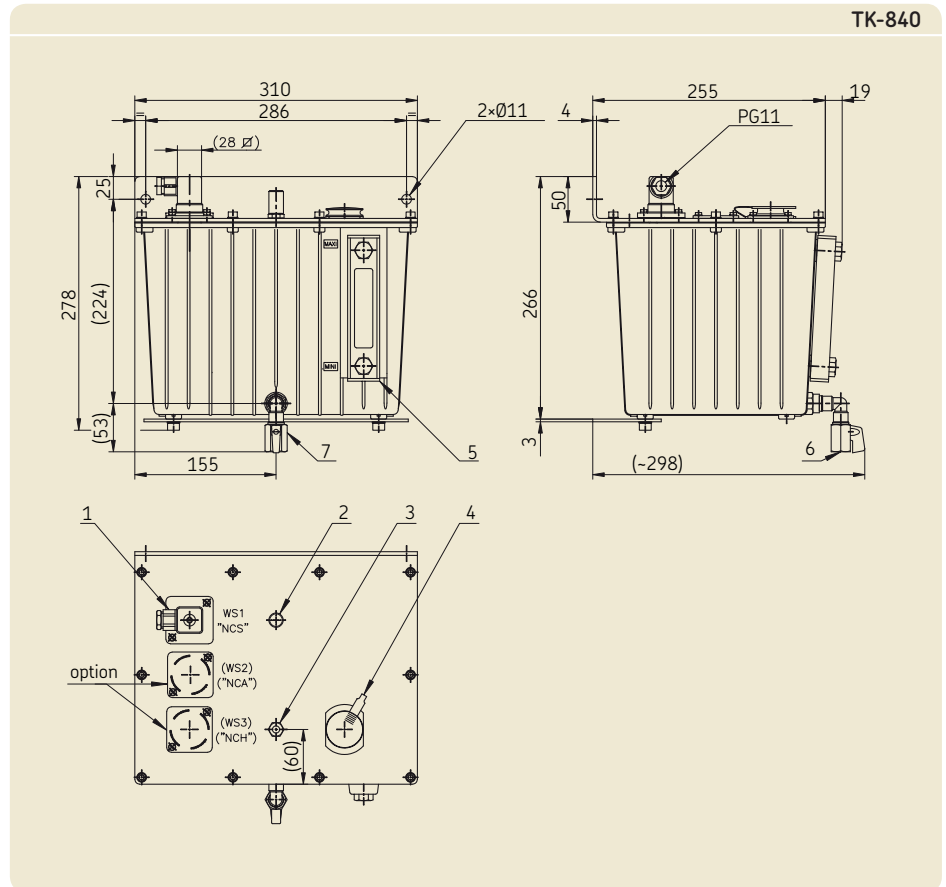
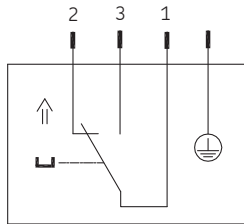
TK-840-V / -VM

1. Min. level switch (with connector), changeover switch
2. Breather
3. Filling port Ø RP 1/4
4. Filling plug with filter
5. Sight glass
6. Outlet port G 1/4
7. Stopcock valve

Level switch

When min. filling level is reached.

- contact 1-2 opens
- contact 1-3 closes



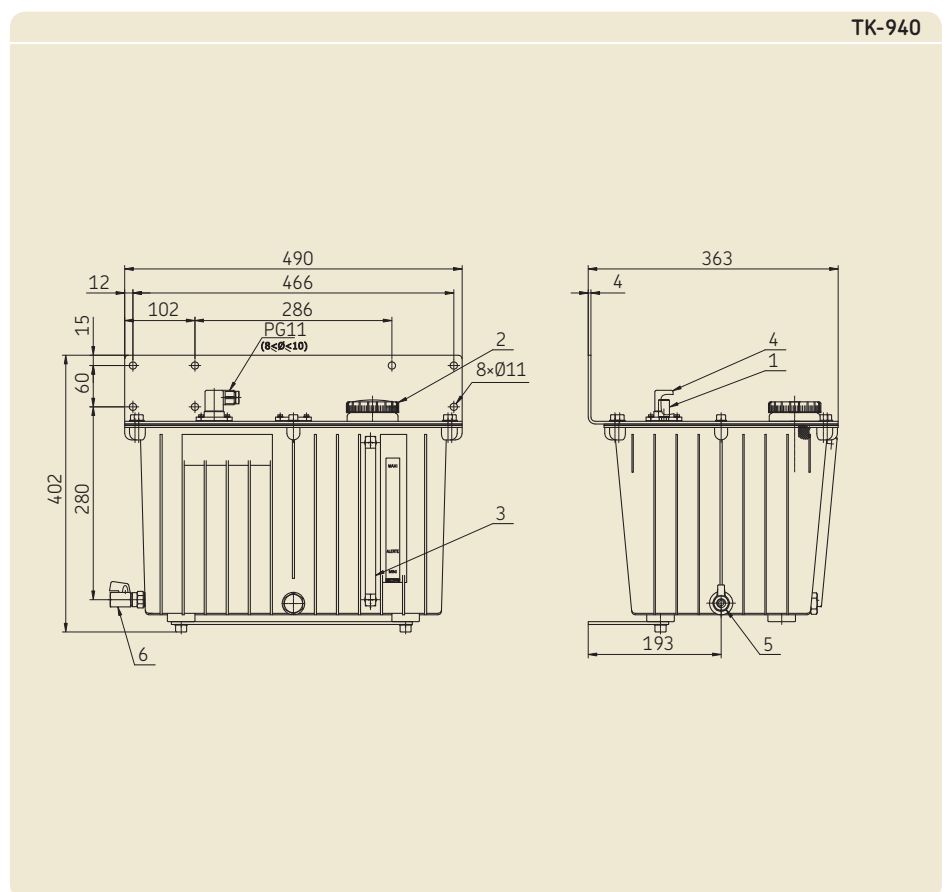
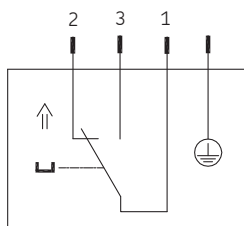
TK-940

1. Breather
2. Filling plug with filter
3. Sight glass
4. Min. level switch (with connector), changeover switch
5. Outlet port G 1/4, max. depth 9 mm
6. Stopcock valve

Level switch

When min. filling level is reached.

- contact 1-2 opens
- contact 1-3 closes



Proximity switches

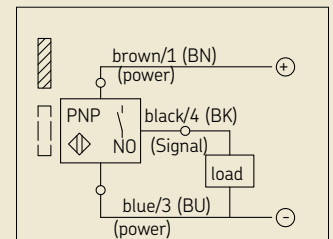
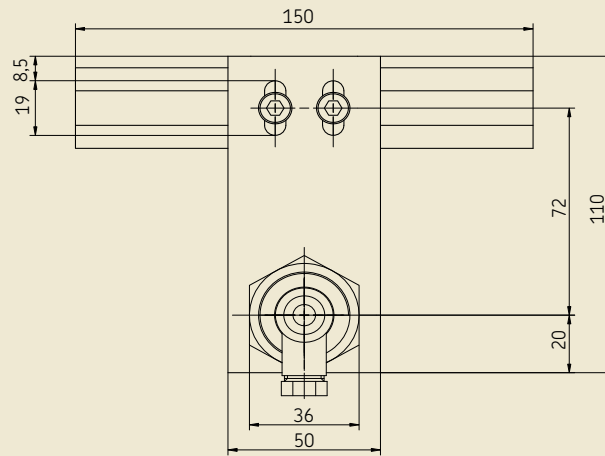
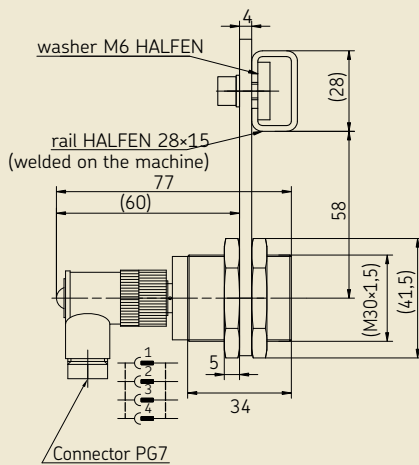
The inductive proximity switches are essential for chain lubrication systems. They accurately detect, without any mechanical contact with the chain, the position of the lubrication points on the running chain. When a lubrication point has been detected, the proximity switch sends a signal to the control unit, which triggers a lubrication impulse (actuation of the pump).

The proximity switches are delivered with a connector or a cable, and a bracket support.

Order information

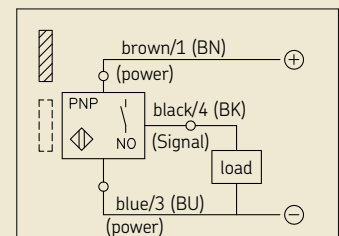
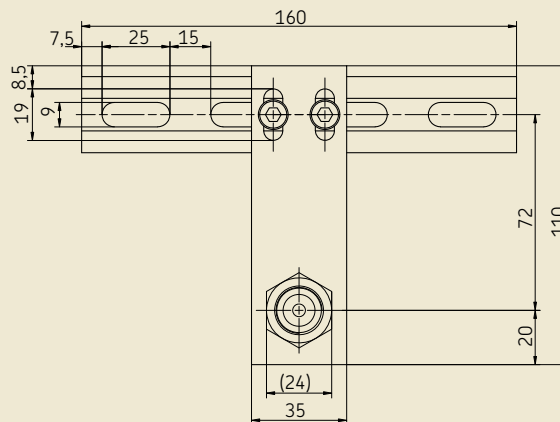
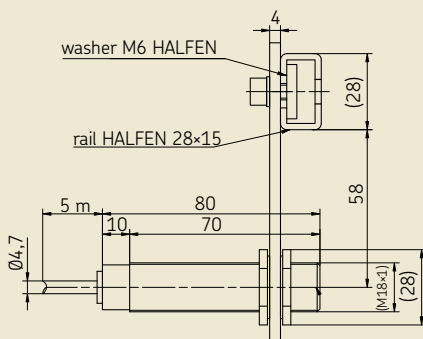
Order No.	Type	Nominal sensing distance (S _n)	Operating voltage	Service temperature [°C]	Housing
UC-1060-11	3 wires, PNP, NO	15 mm	12 to 24 V DC	-25 to +80	plastic, IP67
UC-1060-14	3 wires, PNP, NO	5 mm	10 to 30 V DC	-40 to +175	metal, IP67
UC-1060-16	3 wires, PNP, NO	5 mm	12 to 48 V DC	-25 to +80	metal, IP68
UC-1060-17	2 wires, NO	5 mm	24 to 240 V AC / 24 to 210 V DC	-25 to +80	metal, IP68
UC-1060-19	3 wires, PNP, NO	10 mm	10 to 30 V DC	-25 to +70	metal, IP67

UC-1060-11



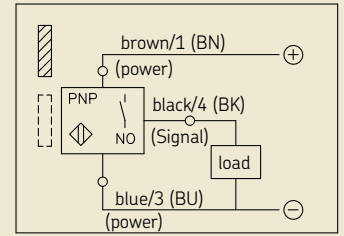
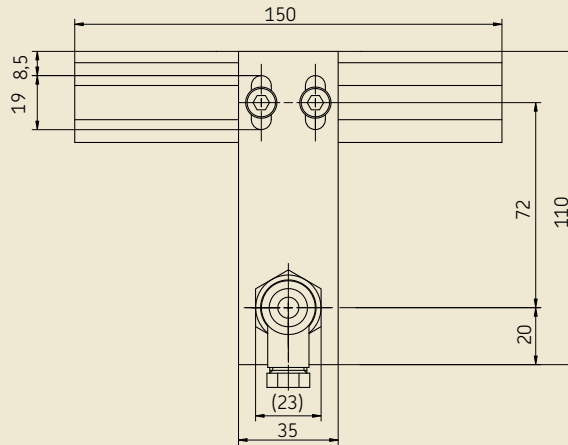
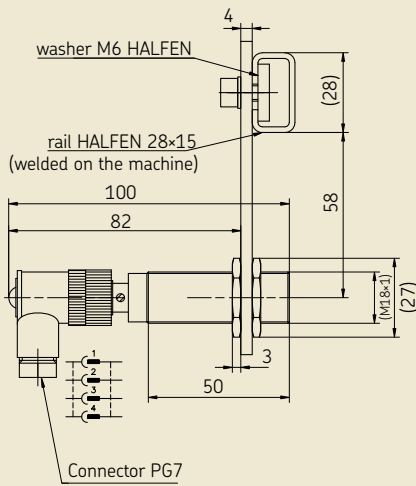
wiring diagram

UC-1060-14



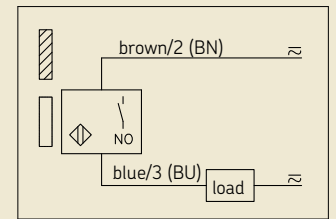
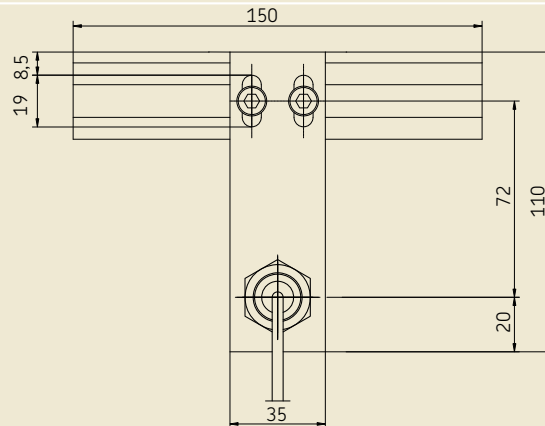
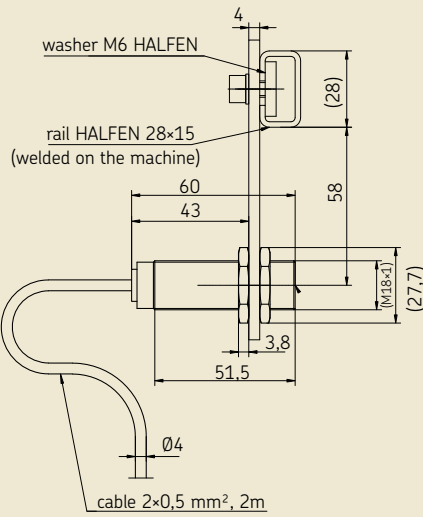
wiring diagram

UC-1060-16



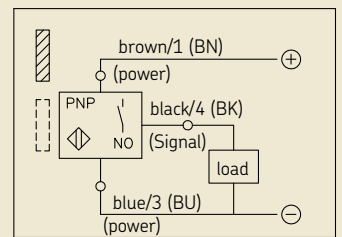
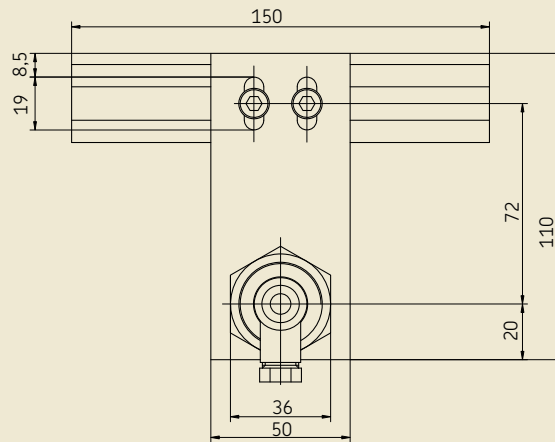
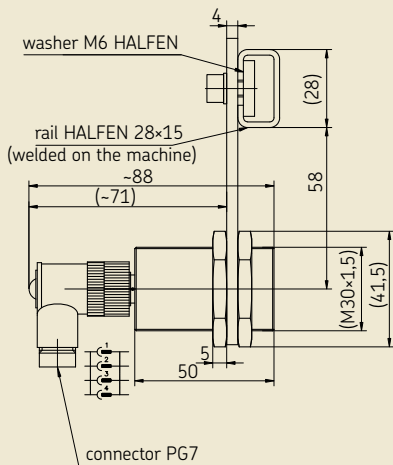
wiring diagram

UC-1060-17



wiring diagram

UC-1060-19



wiring diagram

Connection kits: reservoir / pump

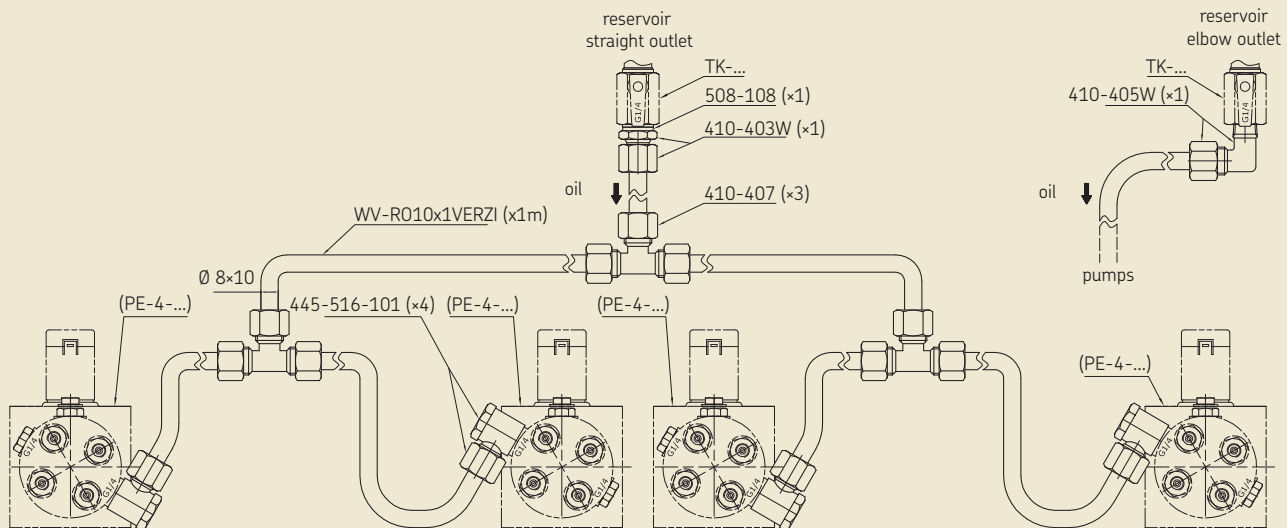
SKF offers several kits to connect the reservoir to the pump(s) PE. These kits differ depending on the outlet G 1/4 used (straight or elbow) and the number of pumps.

Order information

Order No.	Reservoir outlet	Pump(s)	Description
UC-1070-1	straight	1	straight connector (× 1), copper seal (× 1), steel tube (1 m), banjo fitting (× 1)
UC-1070-2	straight	2	straight connector (× 1), copper seal (× 1), steel tube (1 m), banjo fitting (× 2), tee connector (× 1)
UC-1070-3	straight	3	straight connector (× 1), copper seal (× 1), steel tube (1 m), banjo fitting (× 3), cross connector (× 1)
UC-1070-4	straight	4	straight connector (× 1), copper seal (× 1), steel tube (1 m), banjo fitting (× 4), tee connector (× 3)
UC-1071-1	elbow	1	elbow connector (× 1), steel tube (1 m), banjo fitting (× 1)
UC-1071-2	elbow	2	elbow connector (× 1), steel tube (1 m), banjo fitting (× 2), tee connector (× 1)
UC-1071-3	elbow	3	elbow connector (× 1), steel tube (1 m), banjo fitting (× 3), cross connector (× 1)
UC-1071-4	elbow	4	elbow connector (× 1), steel tube (1 m), banjo fitting (× 4), tee connector (× 3)

Connection kit for 4 pumps PE

UC-1070-4 (for reservoir with straight outlet connector)
UC-1071-4 (for reservoir with elbow outlet connector)



Connectors and tubes for the connection reservoir / pump

	Order No.
Copper washer	508-108
Straight screw-in connector	410-403W
Elbow screw-in connector	410-405W
Steel tube Ø 8 × 10	WV-R010x1VERZI
Banjo fitting	445-516-101
Tee connector	410-407
Cross screw-in connector	446-310-001
Straight connector* for tube OD 10	410-410
Flange* for tube OD 10	610-001

*) These parts are not included in the kits

Connection pumps / nozzles or brushes

Connectors and tubes for the connection pump / nozzles or brushes

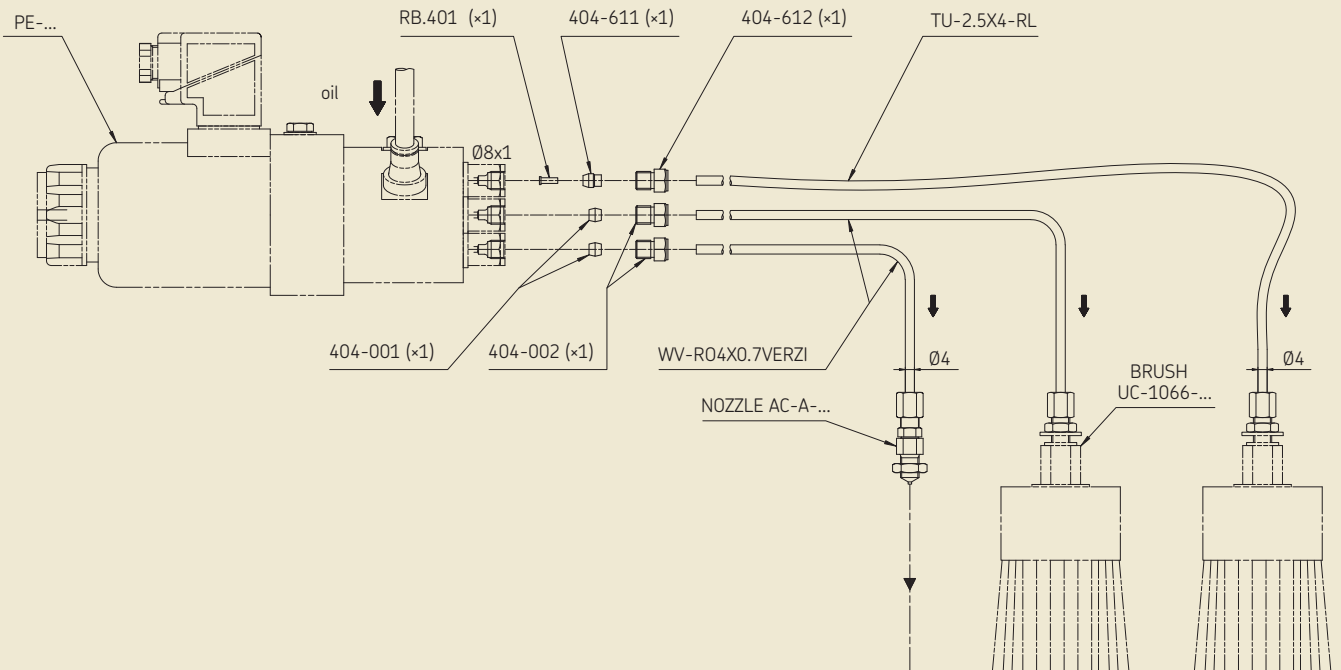
Connection pump / nozzle	Order No.
Steel tube $\varnothing 4 \times 0,7$	WV-R04x0,7VERZI
Connector (pump outlet)	404-002
Double tapered sleeve (pump outlet)	404-001

Connection pump / brush	Order No.
Steel tube $\varnothing 4 \times 0,7$	WV-R04x0,7VERZI
Connector (pump outlet)	404-002
Double tapered sleeve (pump outlet)	404-001

Hose, polyamide, $\varnothing 2,5 \times 4$	TU-2.5x4-RL
Reinforcing socket (pump outlet)	RB.401
Tapered sleeve (pump outlet)	404-611
Connector (pump outlet)	404-612

*) Nozzles and brushes are delivered with their own fittings.

Connection pumps / nozzles or brushes



Drip pan

The drip pans are designed for the electromagnetic pump PE. They minimize the chance of any pollution in the case of leakage at the connections or during maintenance tasks.

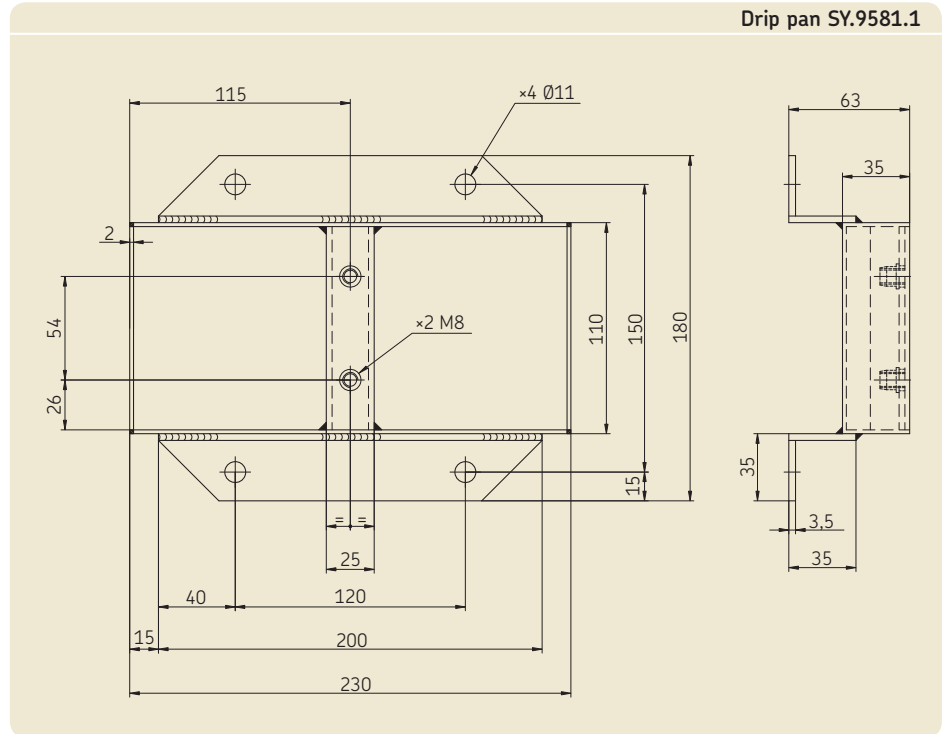
Technical data

Drip pan for 1 pump PE*

Capacity 0,7 l
 Material steel

Order No. **SY.9581.1**

*) The drip pan is delivered with screws and washers for the fixation of the pump



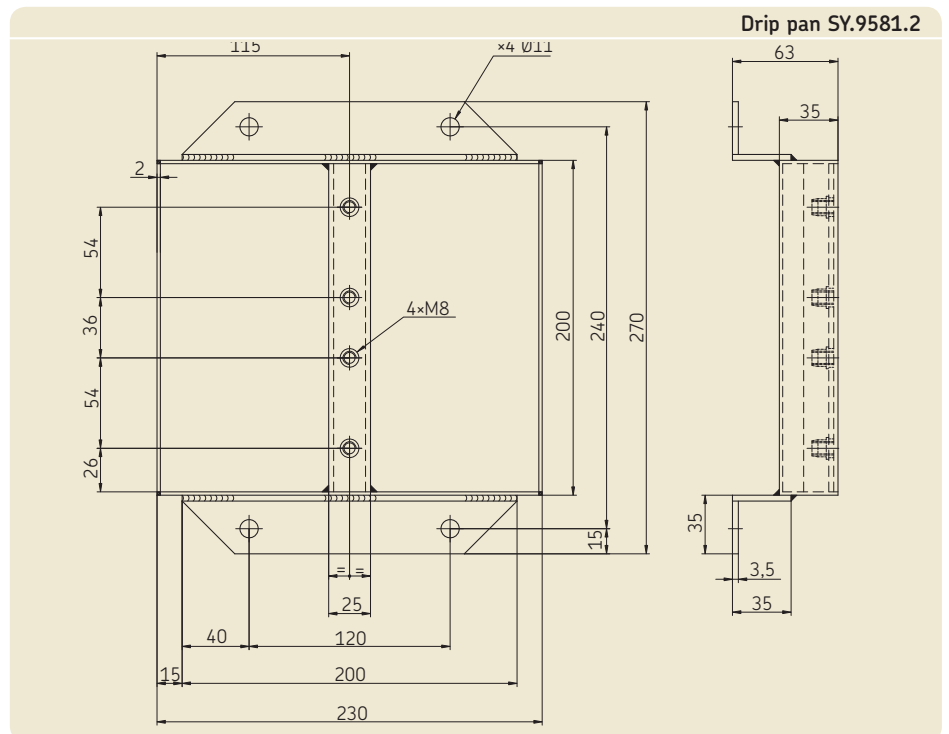
Technical data

Drip pan for 2 pumps PE*

Capacity 1,4 l
 Material steel

Order No. **SY.9581.2**

*) The drip pan is delivered with screws and washers for the fixation of the pumps



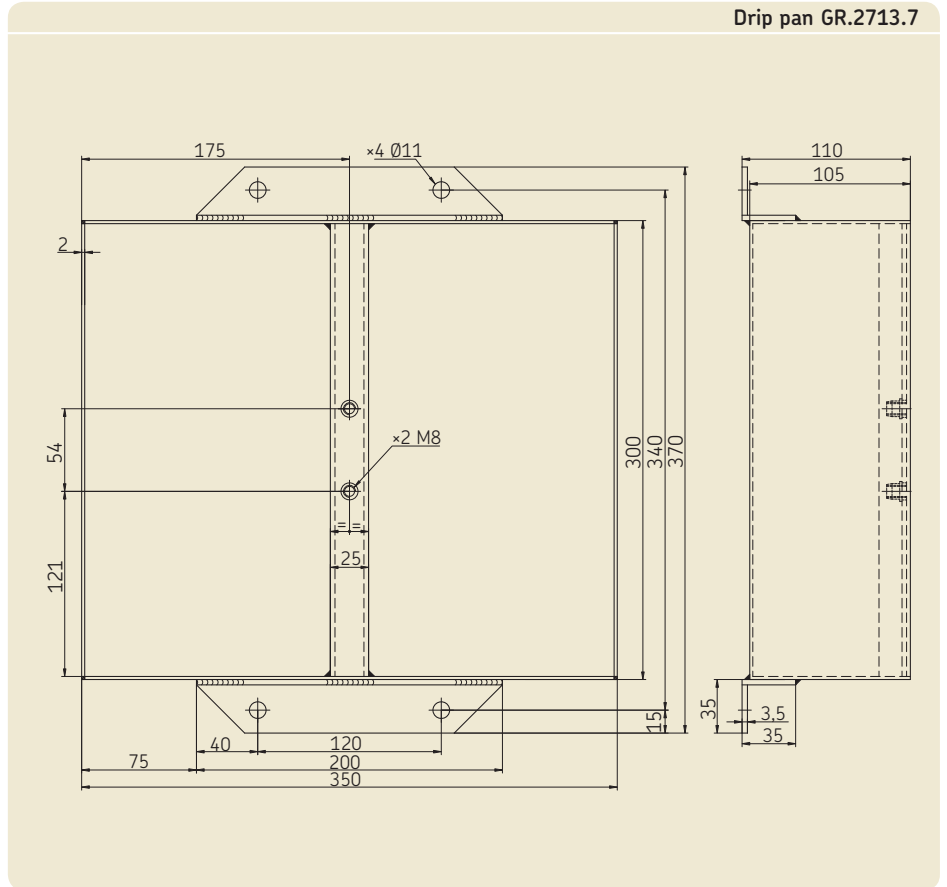
Technical data

Drip pan for 1 pump PE*

Capacity 10,4 l
 Material steel

Order No. GR.2713.7

*) The drip pan is delivered with screws and washers for the fixation of the pump



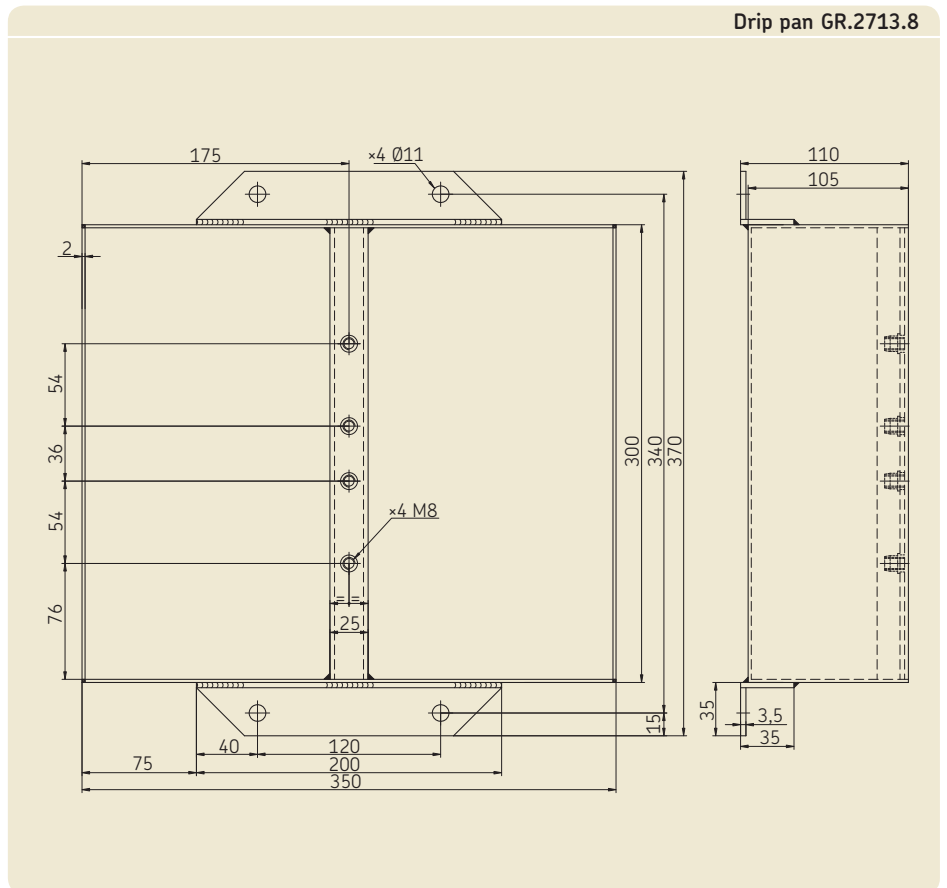
Technical data

Drip pan for 2 pumps PE*

Capacity 10,4 l
 Material steel

Order No. GR.2713.8

*) The drip pan is delivered with screws and washers for the fixation of the pumps



Order No.: 1-4106-EN

Subject to change without notice! (04/2009)

Important product usage information

All products from SKF may be used only for their intended purpose as described in this brochure and in any instructions. If operating instructions are supplied with the products, they must be read and followed.

Not all lubricants are suitable for use in centralized lubrication systems.

SKF does offer an inspection service to test customer supplied lubricant to determine if it can be used in a centralized system. SKF lubrication systems or their components are not approved for use with gases, liquefied gases, pressurized gases in solution and fluids with a vapor pressure exceeding normal atmospheric pressure (1013 mbars) by more than 0,5 bar at their maximum permissible temperature.

Hazardous materials of any kind, especially the materials classified as hazardous by European Community Directive EC 67/548/EEC, Article 2, Par. 2, may only be used to fill SKF centralized lubrication systems and components and delivered and/or distributed with the same after consulting with and receiving written approval from SKF.

Further brochures

1-9201-EN Transport of Lubricants in Centralized Lubrication Systems

This brochure was presented by:

® SKF is a registered trademark of the SKF Group.

© SKF Group 2009

The contents of this publication are the copyright of the publisher and may not be reproduced (even extracts) unless prior written permission is granted. Every care has been taken to ensure the accuracy of the information contained in this publication but no liability can be accepted for any loss or damage whether direct, indirect or consequential arising out of the use of the information contained herein.

