

# Solutions for the marine industry

*SKF has for many years assisted the marine industry in working more efficiently. Innovative solutions for rotating machinery have continuously driven increased productivity and reduced operating costs. Our marine product and service offerings include full condition-based maintenance tools and services as well as integrated solutions for propulsion systems, gearboxes, transmissions and electromechanical motion control. SKF provides products and services for design, new-build, operation and maintenance for all ship types.*



## SKF Bearings and units

Bearings in the SKF Explorer performance class can be used to extend the bearing life of existing equipment. CARB toroidal roller bearings permit smaller and lighter bearing arrangement designs offering the same or improved performance. Customized SKF units (complete bearing units with housing, sealing and lubrication) are also used in electric pod propulsion systems, which provide the highest degree of manoeuvrability and fuel efficiency for some of the most demanding ship designs.

### Contact:

SKF Sverige AB  
Staffan Holmberg  
Marine Segment  
SE-415 50 Göteborg  
SWEDEN  
E-Mail: [Staffan.Holmberg@skf.com](mailto:Staffan.Holmberg@skf.com)  
Tel: +46 (0)31 337 1891



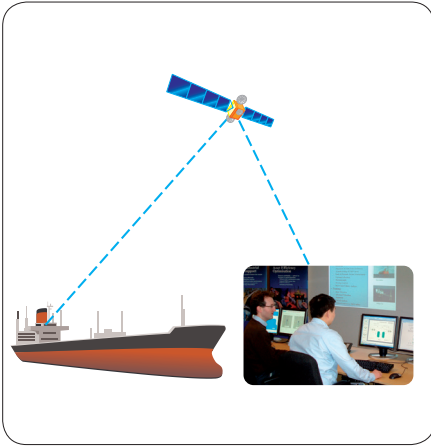
## SKF Coupling systems

OK shaft and flange couplings, Supergrip bolts and marine hydraulic nuts are based on the SKF Oil Injection method. Our precision-made products and systems are installed in a wide range of marine vessels all over the world. Our solutions enable easy and efficient mounting and dismounting of heavy marine components, resulting in more uptime.

### Contact:

SKF Coupling Systems AB  
Jörgen Dahlgren  
SE-813 82 Hofors  
SWEDEN  
E-mail: [skf.coupling.systems@skf.com](mailto:skf.coupling.systems@skf.com)  
Tel: +46 (0)290 284 00





## SKF Condition monitoring

The SKF portfolio consists of world-class condition monitoring services and products that, when properly implemented, help enhance the ship operator's asset reliability and performance. From portable data collection systems for water jet systems to full on-line installations on ships' and rigs' propulsion and positioning equipment, SKF offers condition monitoring solutions for every ship's and OEM's needs.

### Contact:

SKF Reliability Systems  
Gerald Rolfe  
Sundon Park Road  
Luton, LU3 3BL  
Bedfordshire  
UNITED KINGDOM  
E-Mail: [Gerald.Rolfe@skf.com](mailto:Gerald.Rolfe@skf.com)  
Tel: +44 1582 496500

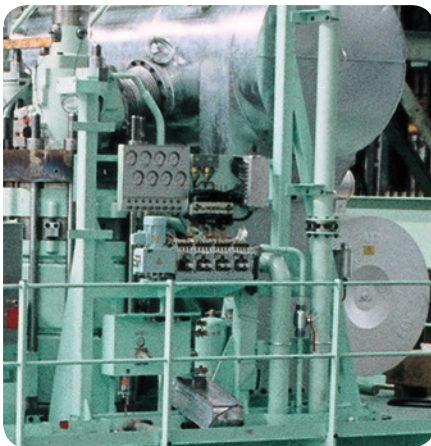


## SKF Alignment services

SKF provides alignment and mounting of main propulsion units and auxiliary equipment. Other available services include 3D measurements, on-site machining and shaft alignment and vibration calculations. The impracticality of most chocking methods led to the creation of SKF Vibracon, making chocking a faster and thus cheaper process. SKF Vibracon is a self levelling, height adjustable and re-usable machinery chock

### Contact:

Machine Support B.V.  
Geoffrey de Vlaam  
Kaartenmakerstraat 7  
2984 CB Ridderkerk  
THE NETHERLANDS  
E-Mail: [Geoffrey.de.Vlaam@skf.com](mailto:Geoffrey.de.Vlaam@skf.com)  
Tel: +31 (0)180 483828



## SKF Lubrication solutions

Diesel engine manufacturers have already relied for more than 60 years on specially designed cylinder lubrication and inlet valve seat lubrication technology. The SKF lubrication portfolio for 4-stroke and 2-stroke engines has been developed for the global OEM market. The exactly timed oil injection cuts oil consumption, CO<sub>2</sub> emissions, and engine operating costs. SKF, the market leader in lubrication systems in general can also solve your lubrication tasks on rudders, deck cranes, PODs, gear boxes, generators, compressors, etc.

### Contact:

SKF Lubrication Systems Germany GmbH  
Markus Boose  
2. Industriestraße 4  
68766 Hockenheim  
GERMANY  
E-Mail: [Markus.Boose@skf.com](mailto:Markus.Boose@skf.com)  
Tel: +49 (0)6205 27-122

© SKF, CARB and VIBRACON are registered trademarks of the SKF Group.

© SKF Group 2014

The contents of this publication are the copyright of the publisher and may not be reproduced (even extracts) unless prior written permission is granted. Every care has been taken to ensure the accuracy of the information contained in this publication but no liability can be accepted for any loss or damage whether direct, indirect or consequential arising out of the use of the information contained herein.

PUB LS/P2 10822 EN · July 2014 · 1-0362-EN

