

POE / PFE Plunger Pumps

1-1111-US

Manually or pneumatically actuated

POE(P) for oil

PFE(P) for fluid grease, NLGI grades 000 to 0



POE-15-0.5



POEP-15-1.0W



POE-15-1.7

These manually or pneumatically actuated plunger pumps were developed for intermittently operated, single-line centralized lubrication systems with piston distributors. They come with the set of valves required for pressure relief and pressure limitation.

The lubricant reservoirs made of transparent plastic are available in three different sizes: 0.5; 1.0 or 1.7 liters.

Versions with / without filling-level switches for the monitoring of critical levels of lubricant.

Startup

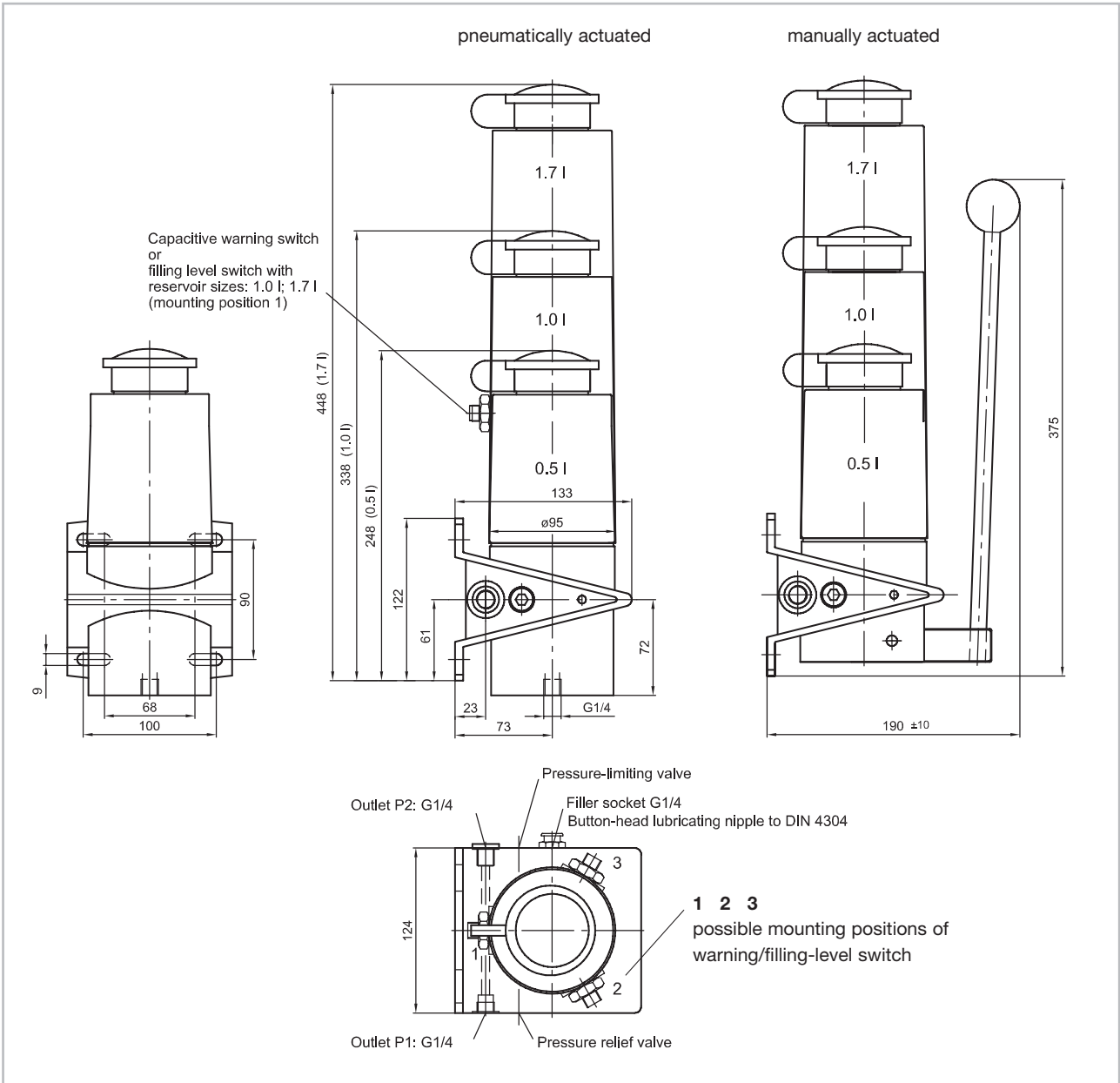
Fill the reservoir with lubricant (POE with oil, PFE with fluid grease) and operate the pump at intervals of 2-3 seconds until lubricant emerges at every lube point. A properly laid system will vent itself!

The venting procedure is helped by

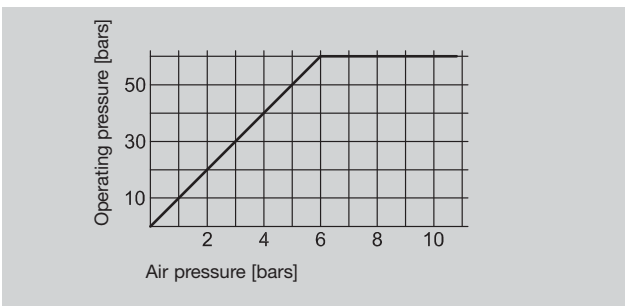
- opening the ends of the main lines until bubble-free oil or fluid grease emerges there,
- filling long secondary lines
 - especially from distributor ports with small metered quantities - before connecting them to the lube point.

Maintenance

1. Check the level of oil/grease and top up the reservoir in good time!
Use lubricant that conforms to the machine manufacturer's instructions.
Always top up oil with a strainer!
2. After the machine has run for an extended period of time check all the tubing connections for tight fits and actuate the pump to check whether lubricant emerges at all the lube points.
Only use original VOGEL spare parts.



Pressure chart for pneumatic drive



Please note!

Cutting-sleeve screw unions conforming to DIN 2353 or VOGEL quick connectors have to be used as connection fittings when the system's hydraulic pressure exceeds 45 bars.

Technical data

Pump

- Drive manual or pneumatic
- Reservoir unit 0.5 l, 1.0 l and 1.7 l
- Reservoir material plastic (PP), transparent
- Outlet ports G 1/4, left or right
- Compressed air port G 1/4 (on bottom of pump)
- Max. operating pressure 30 bars (manual operation)
60 bars (pneum. operation)
- Delivery rate per stroke 15 ccm
- Pressure ratio for pneum. pumps: 10:1
- Actuating air volume =
delivery rate x pressure-limiting valve x pressure [bars]
- Ambient temperature 0 to +60 °C

Fluid

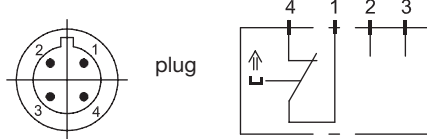
- POE** mineral oils, synthetic and ecofriendly oils; service viscosity 20 to 1500 mm²/s
- PFE** fluid grease, NLGI grades 000 to 0

POE: Filling level switch

for monitoring of min. oil level

Function Contact opens when critical level is reached
 Max. switched voltage 42 V DC
 Max. switching capacity 50 W
 Plug connection 4-pole circular plug.M12x1
 Mounting positions 1, 2 or 3 possible;
 from factory in mounting pos. 2

Circuit

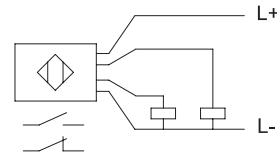


PFE: Warning switch

for monitoring of min. grease level

Function PNP / NO-NC
 Switched voltage 10 ... 36 V DC
 Load current at switch output max. 150 mA
 Type of enclosure IP 67
 Connection 2m PVC cable or 4-pole circular plug M8x1
 Mounting position 1, 2 or 3 possible;
 from factory in mounting pos. 2

Circuit



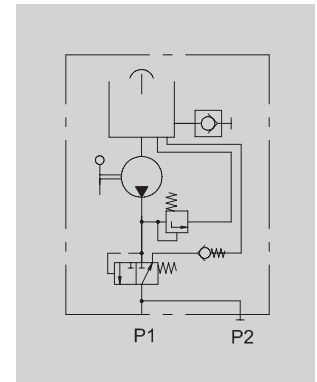
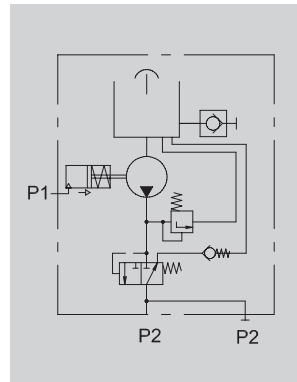
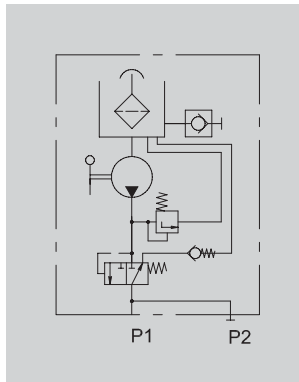
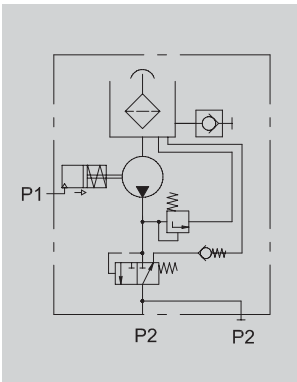
Hydraulic layouts

POEP (pneumatic)

POE (manual)

PFEP (pneumatic)

PFE (manual)



Types for oil

without filling level switch Order No.	with filling level switch Order No.	Delivery rate [ccm/stroke]	Reservoir capacity [liters]	Drive	Max. operating pressure (pressure-limiting valve) [bars]
POE-15-0.5	–	15	0.5	manual	30
POEP-15-0.5	–	15	0.5	pneumatic	60
POE-15-1.0	POE-15-1.0W	15	1.0	manual	30
POEP-15-1.0	POEP-15-1.0W	15	1.0	pneumatic	60
POE-15-1.7	POE-15-1.7W	15	1.7	manual	30
POEP-15-1.7	POEP-15-1.7W	15	1.7	pneumatic	60

Types for fluid grease

without warning switch Order No.	with warning switch Order No.	Delivery rate [ccm/stroke]	Reservoir capacity [liters]	Drive	Max. operating pressure (pressure limiting valve) [bars]
PFE-15-0.5	PFE-15-0.5W1(2) ¹⁾	15	0.5	manual	30
PFEP-15-0.5	PFEP-15-0.5W1(2) ¹⁾	15	0.5	pneumatic	60
PFE-15-1.0	PFE-15-1.0W1(2) ¹⁾	15	1.0	manual	30
PFEP-15-1.0	PFEP-15-1.0W1(2) ¹⁾	15	1.0	pneumatic	60
PFE-15-1.7	PFE-15-1.7W1(2) ¹⁾	15	1.7	manual	30
PFEP-15-1.7	PFEP-15-1.7W1(2) ¹⁾	15	1.7	pneumatic	60

¹⁾ ...W1 = warning switch connection 2 m PVC cable; ...W2 = warning switch connection 4-pole circular plug, M8x1



A brand of the SKF Group

Willy Vogel AG
Motzener Strasse 35/37
12277 Berlin, Germany
P.O.Box 970444 · 12704 Berlin
Tel. +49 (0) 30 - 7 20 02-0
Fax +49 (0) 30 - 7 20 02-111
info@vogel-berlin.de
www.vogelag.com

Willy Vogel AG
2. Industriestrasse 4
68766 Hockenheim
Germany
Tel. +49 (0) 62 05 - 27-0
Fax +49 (0) 62 05 - 27-132
info@vogel-berlin.de
www.vogelag.com

Vogel France SAS
Rue Robert Amy, B.P. 130
49404 Saumur cedex
France
Tel. +33 (0) 241 404 200
Fax +33 (0) 241 404 242
info@vogelfrance.com
www.vogelfrance.com

Notice!

All products from VOGEL may be used only for their intended purpose. If operating instructions are supplied together with the products, the provisions and information therein of specific relevance to the equipment must be observed as well.

In particular, we call your attention to the fact that hazardous materials of any kind, especially the materials classified as hazardous by EC Directive 67/548/EEC, Article 2, Par. 2, may only be filled into VOGEL centralized lubrication systems and components and delivered and/or distributed with the same after consultation with and written approval from VOGEL.

All products manufactured by VOGEL are not approved for use in conjunction with gases, liquefied gases, pressurized gases in solution and fluids with a vapor pressure exceeding normal atmospheric pressure (1013 mbars) by more than 0.5 bar at their maximum permissible temperature.